

QL-700

brother
at your side



QL-700 Professional Label Printer

The versatile QL-700 offers easy to use software and integration with Microsoft Office Applications, for all labelling requirements.

- Plug and Print (no software installation required*)
- Print up to 93 labels/minute and up to 300 x 600 DPI
- Built-in automatic label cutter
- Includes 2 rolls of labels, software and cables



Plug and Print

Print labels without installing software*. There are no virus concerns and is easily shared with others.



Print labels the size you need

Create labels from 12.7mm up to 1 metre in length, using the built-in automatic cutter.



Easy to change rolls

Each roll is supplied on a spool that simply slots into the correct position in the QL-700 every time.



Up to 300 x 600 DPI print resolution

Produce easy-to-read labels with crisp text and high quality graphics.



USB Interface

Quick and easy to set up and use. The USB cable is supplied with the QL-700 as standard.



Up to 93 labels/minute**

If you are printing one or several labels at a time, the QL-700 will have them ready in just a few seconds.



Give your company a professional image

Achieve a more professional finish and improve office efficiency through the use of labelling.

Envelopes, packages and parcels can be professionally addressed using one of the many sizes of label available, and can even include your business logo if required. Within your organisation, ensure important information can be located quickly through the clear identification of files, folders, CD and DVD discs.



* Using the built-in P-touch Editor Lite on Microsoft Windows PC's.

Mac users can use the supplied CD to install P-touch Editor 5.0 software and printer drivers (available in English only)

** 93 labels/minute print speed does not apply on Editor Lite mode

Simply plug-in and start labelling immediately

The Brother QL-700 label printer offers an easy way to print professional looking labels for a wide range of uses throughout the workplace. We have made label printing easier than ever by incorporating “P-touch Editor Lite” label design software inside the QL-700. Windows users simply need to connect the USB cable, run the software from the pop-up message, then design and print your label. No software or drivers need to be installed.



1. Connect the USB cable

When connected to your PC, the QL-700 is identified as a USB flash drive and a new drive letter appears on your computer. This contains the label design software.

2. Run the built-in label design software

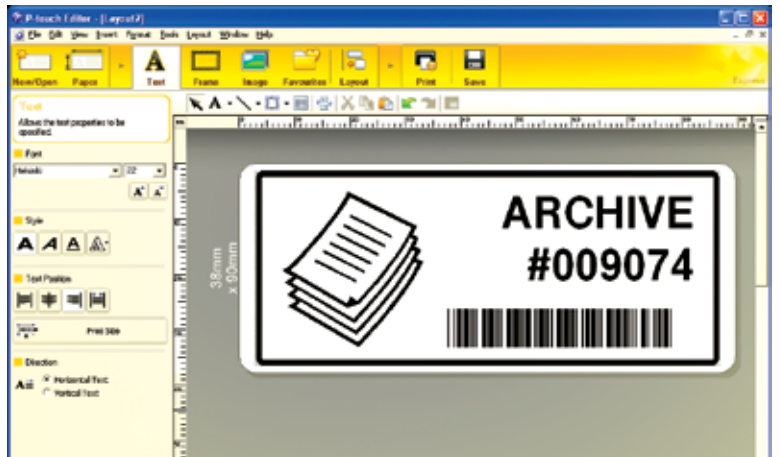
Double-click on the P-touch Editor Lite icon to launch the label design software. As this is built-in to the QL-700 it is always available on whichever PC you connect it to.

3. Design and print your label

Simply design your label by adding text, graphics and frames and then print. No software is installed to your PC during this process.

Also includes professional label design software

The more powerful P-touch Editor software is supplied on CD-ROM, which is installed in the standard way. Offering integration with Microsoft Word, Excel and Outlook, you can print labels directly from these applications. Simply highlight the address, text or information you require, then click the “P-touch” icon in the toolbar to print your label immediately. You can include barcodes, graphics, frames and other information on your labels, whatever your requirements.



QL-700

Effortless label printing - for all applications

The QL-700 uses Brother DK label rolls. Supplied on a spool that incorporates a roll guide, this ensures that the label is always installed correctly, and recognises the size of label inserted. And you get none of the alignment problems associated with printing labels in a traditional printer.

So whether you are printing just one label, or several at a time, the Brother QL-700 ensures each label prints perfectly, time after time.

Technical Specifications

Hardware	
Print Speed	150 mm/sec / 93 standard address labels/min
Print Resolution	300DPI
Control panel buttons	4: (power, P-touch Editor Lite, feed, cut)
Interface	USB 2.0
Cutter	Durable auto cutter
Print Method	Direct thermal
Power supply	Internal power supply
Roll type	DK rolls (DK die-cut labels / DK continuous length tape)
Max. roll / print width	62 mm / 59 mm
Min. /Max. label length	12.7 mm / 1 metre

Software (P-touch Editor 5)	
Font support / fonts supplied	All installed truetype fonts / 17
Font styles	11 styles: Normal, Bold, Italic, Outline, Shadow, Shadow Light, Horizontal, Surround, Frame Out, Inverted Text, Underline
Number of frames	126
Image file formats support	BMP, JPG, JPEG, PNG, TIF, GIF, DIB, WMF, EMF, ICO
Screen capture	Yes
Multi line printing	Yes
Multi block printing	Yes
Vertical printing	Yes
Rotate printing	Yes
Number of copies	2 - 9999
Mirror printing	Yes
Sequential numbering	1 - 5000 / A - Z / a - z
Barcode protocols	CODE39, CODE128, UCC/EAN-128 (GS1-128), ITF(I-2/5), \CODABAR NW-7), UPC-A, UPC-E, EAN-13 (JAN13), EAN-8, ISBN-2 (EAN-13 ddOn2), ISBN-5(EAN-13 AddOn5), POSTNET, Laser Bar Code, GS1 DataBar (RSS) (Omnidirectional, Truncated, Stacked), PDF417, QR Code, Micro QR code, Data Matrix, Maxicode csv, txt, mdb, xls, Microsoft SQL Server Database
Database / file link support	Microsoft Word / Excel / Outlook (Office 2000/2003/2007/2010)
Add-in support	Yes
Automatic date and time printing	Yes
Languages	English / Danish / Dutch / French / German / Italian / Norwegian / Portuguese / Spanish / Swedish / Finnish / Czech / Polish / Hungarian / Simplified Chinese / Russian / Turkish / Japanese

P-touch Editor Lite	
Font support / fonts supplied	All installed truetype fonts / 0
Font styles	4 styles: Normal, Bold, Italic, Underline
Number of frames	10
Image file formats support	BMP, JPG, JPEG, PNG, TIF, GIF, DIB, WMF, EMF, ICO
Screen capture	Yes
Multi line printing	Yes
Multi block printing	Yes
Vertical printing	Yes
Rotate printing	Yes
Number of copies	2 - 200
Mirror printing	Yes
Sequential numbering	1 - 200 / A - Z / a - z
Barcode protocols	No
Database / file link support	No
Add-in support	No
Automatic date and time printing	No
Languages	English / Danish / Dutch / French / German / Italian / Norwegian / Portuguese / Spanish / Swedish / Finnish / Czech / Polish / Hungarian / Simplified Chinese / Slovak / Slovene / Romanian / Croatian / Bulgarian / Russian / Turkish / Japanese / Traditional Chinese / Korean / Traditional Chinese / Korean / Thai / Vietnamese / Arabic

System Requirements

Operating System	Windows XP / Windows Vista / Windows 7 Mac OS X 10.4.11 - 10.7
Minimum CPU	As recommended by operating system
Hard Disk Free Space	100MB or more
Interface	USB 1.1 or later specification
Graphics	SVGA with high colour or better
Other	CD-ROM drive for installation

Included Items

QL 700 label printer
2 x starter rolls:
- 29 mm x 90 mm standard address labels (100 labels)
- 62 mm continuous length paper tape (8 metres)
USB and power cables
CD-ROM containing P-touch Editor 5.0, printer drivers and user guides
Quick setup guide

Supplies

DK-11201	Die-Cut Paper Standard Address label 29mm x 90mm x 400 labels
DK-11202	Die-Cut Paper Shipping / Name Badge label 62mm x 100mm x 300 labels
DK-11203	Die-Cut Paper File Folder label 17mm x 87mm x 300 labels
DK-11204	Die-Cut Paper Multi Purpose / Address label 17mm x 54mm x 400 labels
DK-11207	Die-Cut Film CD/DVD Film label Diameter 58mm x 100 labels
DK-11208	Die-Cut Paper Large Address label 38mm x 90mm x 400 labels
DK-11209	Die-Cut Paper Small Address label 29mm x 62mm x 800 labels
DK-11218	Die-Cut Paper 24mm Round label 24mm Diameter x 1000 labels
DK-11219	Die-Cut Paper 12mm Round label 12mm Diameter x 1000 labels
DK-11221	Die-Cut Paper Square label 23mm x 23mm x 1000 labels
DK-11240	Die-Cut Paper Large Multipurpose label 102mm x 51mm x 600 labels
DK-11241	Die-Cut Paper 102mm Large Shipping label 102mm x 152mm x 200 labels
DK-22113	Continuous Film Wide Continuous Length 62mm x 15.24m
DK-22205	Continuous Paper Wide Continuous Length 62mm x 30.48m
DK-22210	Continuous Paper Medium Continuous Length 29mm x 30.48m
DK-22211	Continuous Film Medium Continuous Length 29mm x 15.24m
DK-22212	Continuous Film Wide Continuous Length 62mm x 15.24m
DK-22214	Continuous Paper Narrow Continuous Length 12mm x 30.48m
DK-22243	Continuous Paper Extra-wide Continuous Length 102mm x 30.48m
DK-22606	Continuous Film Wide Continuous Length 62mm x 15.24m
DK-44205	Continuous Paper Wide Continuous Length Removable 62mm x 30.48mm
DK-N55224	Continuous Thick Paper Continuous Length Removable 54mm x 30.48mm

Weights and Dimensions

Dimensions	128 mm(W) x 221 mm(D) x 153 mm(H)
Weight	1.12kg (excluding DK roll)

*Using the built-in P-touch Editor Lite on Microsoft Windows PC's.

Mac users can use the supplied CD to install P-touch Editor 5.0 software and printer drivers (available in English only)

Contact :

brother
at your side

Brother International (Aust) Pty Ltd

Level 3, Building A, 11 Talavera Road, Macquarie Park, NSW 2113

Tel: +61 (2) 9887 4344 Fax: +61 (2) 9888 9707

Website: www.brother.com.au

All specifications correct at time of printing. Brother is a registered trademark of Brother Industries Ltd. Brand product names are registered trademarks or trademarks of their respective companies.



Working with you for a better environment
www.brotherearth.com